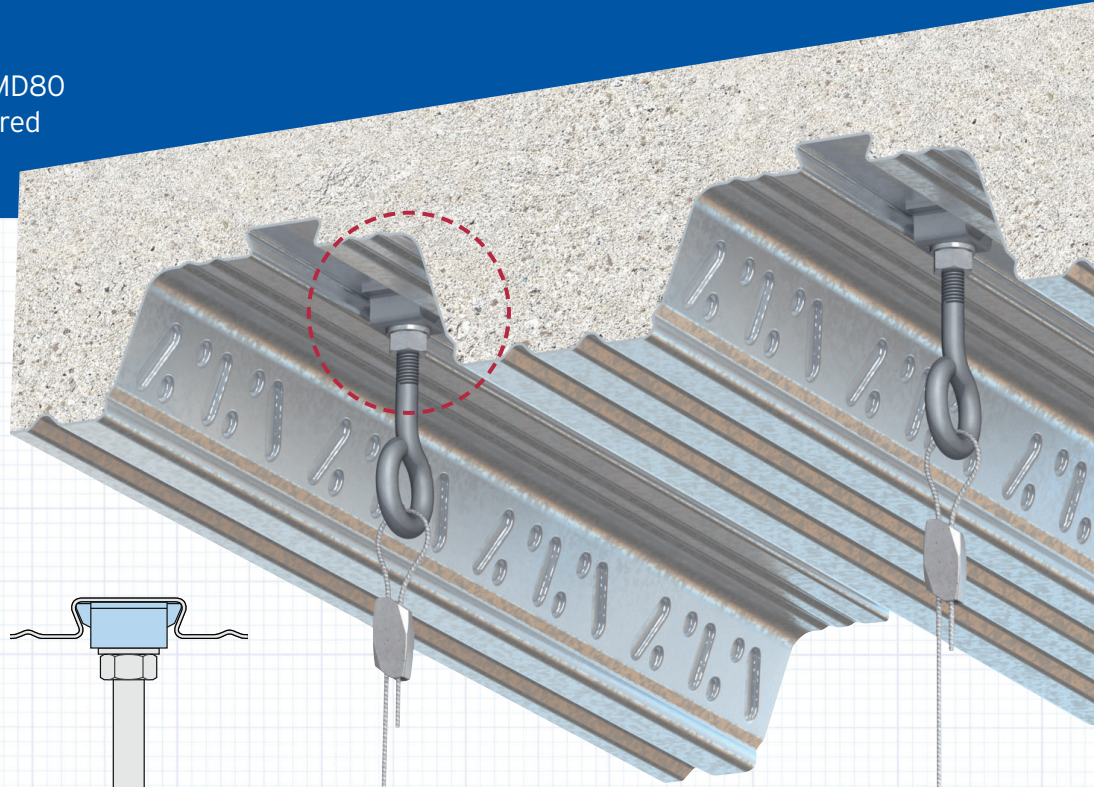
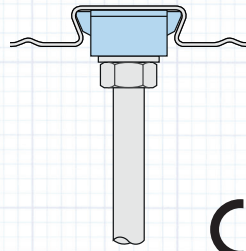
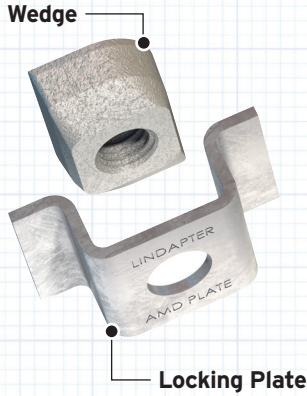


Type AMD

Suitable for AMD60 and AMD80 decking profiles manufactured by Anglian Metal Deck.



Locking Plate: Pre-galvanised strip.
Wedge: Malleable iron, bright zinc plated.

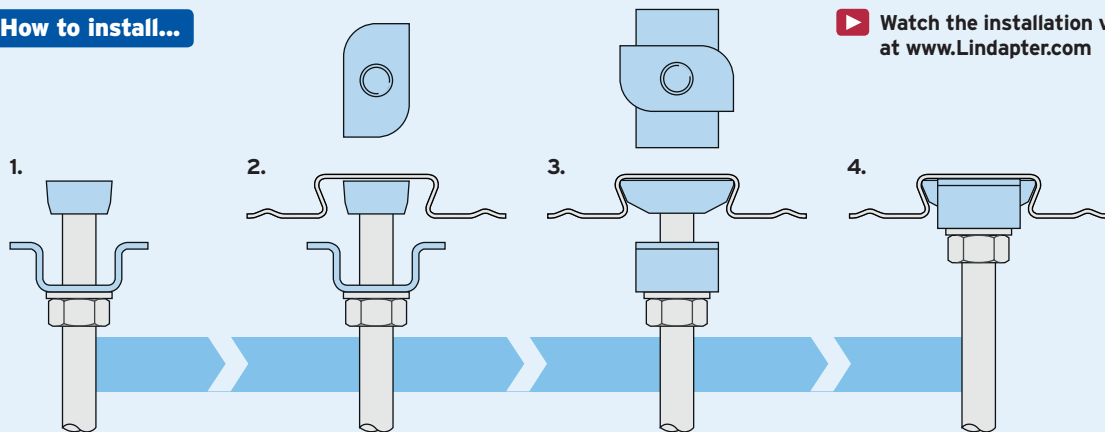


Product Code	Rod min 4.6	Safe Working Load (FOS 3:1)	
		Tensile / 1 Rod kN	Tightening Torque Nm
AMD06	M6	1.0	10
AMD08	M8	1.0	10
AMD10	M10	1.0	10

▶ Although the Type AMD is similar in appearance to the Type AW, it should NOT be used in profiles manufactured by Hare Decking.

How to install...

▶ Watch the installation video at www.Lindapter.com



- 1) Pre-assemble the locking plate and wedge (flat surface facing up) onto the threaded rod.
- 2) Insert wedge into the re-entrant channel of the decking, rotate 90°.
- 3) Slide plate up the threaded rod, over the wedge, to lock it in position into the channel.
- 4) Tighten the locknut beneath the plate to hold the assembly in position.

▶ Install the decking fixings after the concrete has been poured and has reached full strength.

▶ If the decking profile is deformed or distorted, do not install the fixing. If in doubt, contact the Technical Support team for advice.